



P R I V A T E

A private home surrounded by trees with unobstructed views of the Whistler/Blackcomb mountain range.



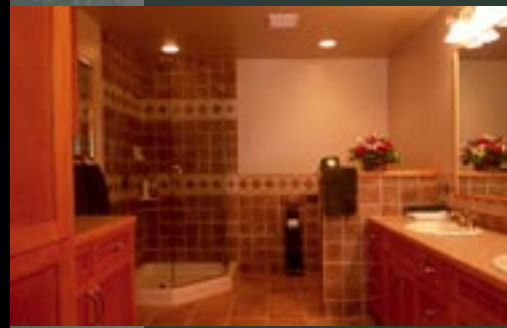
Spacious Living Room



Games Room



Private Backyard Setting



Heated Floors

Alpine Chalet
whistler, bc

Alpine Chalet

Features



Twin to King Bedroom with Fireplace



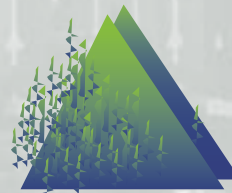
Twin to King Beds



Alcove Entrance to Dining Room for 10

- 3,100sq/ft Multi-Level; 3 floors with 3 landings (6 levels)
- 4 bedrooms can configure to 8 Singles or 4 Kings
- 4 full bathrooms
- Plus 1/2 bath (powder) on main floor
- Bedroom 1: Top Floor; Twins to King, en-suite bath
- Bedroom 2: 5th Level Landing; Twins to King, Shared bath with Bedroom 3
- Bedroom 3: 5th Level Landing, Twins to King, Shared bath with Bedroom 2
- Bedroom 4: Main Floor; Twins to King, fireplace, bath below on 2nd floor landing
- Full bath, double headed shower
- Main floor living room with fireplace, bar and amazing views
- Bottom floor living room with large TV video's/ CD's/games room
- Computer with High-speed internet access, data port and wireless connection
- Pool table room
- Full laundry
- Fully equipped kitchen
- 8 person outdoor hot tub
- Parking for 3 vehicles
- Bavarian style character home
- Balcony with fabulous mountain range views
- BBQ patio and back yard
- 3 fireplaces, wood burning/fire-logs
- ANY GROUP OR FAMILY CONFIGURATION
- Tourist zoned home in private residential area, group and family privacy.

Proudly Managed
and Presented by:



Whistler Home Holidays Inc.
BRITISH COLUMBIA - CANADA

3114 Tyrol Crescent, Whistler, British Columbia, Canada, V0N 1B3
Phone: 604.938.9256 1.888.644.7444 Fax: 604.938.9259
Web Site: www.homeholidays.com Email: wvh@homeholidays.com

Whistler's Home Rental and Executive Services Specialists